

NA MELE O NA HOKU
(The Songs of the Stars)
c/o D. F. Sanders
1415 Victoria St., #206
Honolulu, Hawaii 96822

Vol III, No. 3, November/December, 1990

WHAT'S THE LATEST FROM MISTY? BY THE SWORD, a bridge book tying together the Tarma and Kethry books and the Kerowyn books, is due to be released by DAW in February, 1991. The manuscript, which was turned in to the publisher this summer, was 666 pages long, a true epic! And a new Valdemar trilogy in the works, entitled THE MAGE WINDS, centers on the character of Elspeth. The books will be called WINDS OF FATE, WINDS OF CHANGE, and WINDS OF FURY. Also, I just heard from Ellen Guon that BAEN has agreed to buy the next two books in the KNIGHT OF GHOSTS AND SHADOWS series, and they will be called SUMMONED TO TOURNEY and LEAGUES BEYOND. Congratulations, Ellen and Misty! In addition, TOR has expressed an interest in at least two more Diana Tregarde books. And, what's this I hear about a collaboration between Misty and Anne McCaffrey? At FIREBIRD, work is nearing completion on the two tapes OATHBOUND and OATHBREAKERS, companion tapes to Misty's books of the same name, as well as a tape based on the VANYEL series. Serious collectors take note!

Now for the really good news! This December, Misty and Larry Dixon will tie the knot at a small, private ceremony in Las Vegas ('bout time, gang!). Formal celebrations, all invited, will take place next February at the Circle Oroboros convention in Meridian, Mississippi, which was the con where they met two years earlier! Details will be announced for those who plan to attend (or contact Judith Louvis with Queen's Own, address listed elsewhere in this newsletter).

The Latest Release from FIREBIRD ARTS & MUSIC, INC. P. O. Box 14785 Portland, OR 97214, 1-800-752-0494, is something we've all been eagerly anticipating. It's ST. ELMO'S FIRE, a tape of some of the most popular songs written by Duane Elms, performed by the incomparable Larry Warner! Songs include "Dawson's Christian," "Startide Rising," "Startide Rising," "Threes, Rev. 1.1," "Spacer's Home," and many other fine songs. ST. ELMO'S FIRE is available from Firebird for \$10.00 plus shipping. The companion songbook to this tape, AT THE HELM, is also available for \$12.00 plus shipping. Give Firebird a call and order your set today! Good tape, Duane and Larry!

THE SOOTHSAYER is a semi-annual magazine devoted to the genres of science fiction, fantasy and horror. It includes stories, poetry, articles, reviews, and interviews. For submission guidelines, send an S.A.S.E. to Denise A. Park, 5528 East Greenlake Way North, Apt. 19, Seattle, WA 98103 to inquire or subscribe. Payment for submissions will be in the form of contributor's copies.

SNOW LEOPARD

by D. F. Sanders & Cecelia Eng

CHORUS:

Snow leopard, be my Guide.
 Lead me o'er the countryside.
 Mountain pass is shining younder:
 Calls me ever on to wander!

North wind, blow me where you will --
 To frozen reaches, pale and still.
 As we brave high mountain snows,
 What awaits us, no one knows.
 Ice and tundra, we are one,
 Here, beneath the midnight sun.
 Loneliness, my constant friend,
 Rides with me 'till journey's end.

BRIDGE 1:

I can hear in the hush, in the endless hush,
 The reindeer as they run,
 And I see in a flush, in a rosy flush
 Of light, the northern sun. CHORUS

Pale aurora show my track.
 Now there is no turning back.
 Midnight winds that lead me on
 Whisper of the distant dawn.
 Far it is that I must ride,
 Faithful leopard by my side.
 Reindeer bears me where I please.
 High adventure my heart frees.

BRIDGE 2:

Though I go far away, very far away,
 My thoughts are of my home.
 But I know through the day, neverending day,
 That I am bound to roam. CHORUS

Many silent miles I ride.
 Many more I must abide,
 Never resting 'till the hour
 Peace and joy are in my power.
 Where my people wait for me,
 There my heart will ever be,
 Far beyond the realm of night,
 'Neath the sun's eternal light. CHORUS

SLEEP MY BELOVED

by D. F. Sanders & Cecelia Eng

Sleep my beloved, wherever you are.
Winds of the northland have carried me far.
Darkness rides with me: it shows me the way,
But I shall return with the break of the day.

The night lasts forever;
It comes with the snows,
And dwells in the places
That nobody knows.
To some, it means comfort;
To others, despair.
It hangs like a veil
In the crisp mountain air.

Sleep my beloved, wherever you are.
Winds of the northland have carried me far.
Darkness rides with me: it shows me the way,
But I shall return with the break of the day.

I watch the aurora's
Frail beauty on high.
It shines, ghostly-pale,
On the place where I lie.
The moon's face is hidden.
The stars, ever bright,
Are friends that stay with me
Throughout the long night.

Sleep my beloved, wherever you are.
Winds of the northland have carried me far.
Darkness rides with me: it shows me the way,
But I shall return with the break of the day.

My solitude haunts me.
It clings to my soul,
And trails close behind me
As I seek my goal.
Yet knowing you wait for me
Lightens my load.
I don't mind the silence
Of this lonely road.

Sleep my beloved, wherever you are.
Winds of the northland have carried me far.
Darkness rides with me: it shows me the way,
But I shall return with the break of the day.

A Hard Day's Knight

HA MBLB O HA HOU

Words and Music: Glen Hammer



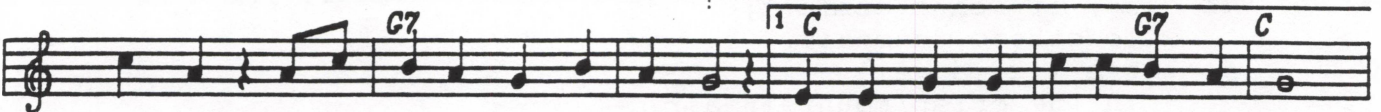
I guess that e'en the best of us have days that aren't quite up to snuff but I



never thought I'd be in such a fix I only did what I thought best my talent stood up



to the test when I saved her from that dragon's tricks Though I was trying to im-



press her, her op - pinion of me's lesser Since that fateful morn in Dragons' Glen



I struck the She likes dragons more than she likes men

I guess that even the best of us
Have days that aren't quite up to snuff
But I never thought I'd be in such a fix
I only did what I thought best
My talent stood up to the test
When I saved her from that dragon's tricks

Chorus: Though I was trying to impress her
Her opinion of me's lesser
Since that fateful morn in Dragons' Glen
I struck the wyrm a fatal blow
How was I supposed to know
She likes dragons more than she likes men

I didn't stop to ask her leave
I just charged right in to reave
I'd rescue her from such a horrid fate
Only after it was dead
Did my triumph change to dread
When I saw the stricken look upon her face

She said, "You're such a typical man
Who kills what he can't understand
Today you have destroyed a noble heart
He smoked a bit, but never drank
He was gentle, kind, and I'll be frank
I'd rather that you were the one deceased

She had a lengthy diatribe
On the faults to which men do subscribe
But I didn't wait around to hear the rest
I hopped my horse and rode away
And resolved that from this day
I'd only rescue maids at their behest

© Copyright 1989 by Glen Hammer

WINGS

by D. F. Sanders

Though he is blind,
 He sees a world which we will never know,
 The colors and the images of dreams,
 Graced by the songs
 That fill his thoughts until they overflow.
 He is the perfect instrument, it seems.

He cannot speak,
 No words will come to him, but he can sing.
 Where he finds his talent, who can say?
 He knows of love,
 And brings into his world all he can bring.
 He seems to find more beauty day by day.

He can't be taught,
 But he can learn the beauty of a song.
 His joy of music is too great to measure.
 This is his life:
 This is the only place where he belongs.
 A singing heart becomes his perfect treasure.

With song, he sees,
 And learns, and speaks with eloquence and mirth.
 The chains that bind his body disappear.
 A song has wings
 That let him soar beyond the cares of Earth
 And find the key to banish every fear.

c Copyright 1980 by Debra F. Sanders

THE QUEEN'S OWN is an international fan club dedicated to the writings of Mercedes Lackey. There is an informative newsletter, and annual dues of \$8.00 for 10 issues. Gifts of cash or stamps are always welcomed to offset expenses (subtle hint #23), and members who volunteer to help with some aspect of putting together the newsletter are given extra credit toward becoming a Herald. For info, send an S.A.S.E. to Judith Louvis, The Queen's Own, P. O. Box 43143, Upper Montclair, New Jersey 07043, or call (at a reasonable hour! -- get your timezones straight, gang!) (201) 744-8575.

Visit WALDENBOOKS in the Ward Warehouse for the latest in Science Fiction, Fantasy and Horror books. Colleen Lashway, our own resident book expert and world convention traveller extraordinaire, will be happy to help you find whatever you need!

BERGERON GRAPHIC DESIGN, 1701 Broadway, Suite 245, Vancouver, WA 98663. Beautiful cards and stationery designed by Stephanie Bergeron. Many different nature and fantasy designs. Write for

free catalogue. Note: Stephanie has also begun crafting lovely little psalteries. Contact her for more information on a custom-made instrument with accessories.

TALES FROM THE WHITE HART, Kathy Sands, 3360 Greenmount Avenue, Baltimore, MD 21218, (301) 889-0099. SF/F bookstore which also carries a variety of Filk and Folk music, including some of the newest selections from Firebird Arts and Music, as well as some hard to find Off Centaur selections. Look for them at various conventions.

QUICKSILVER FANTASIES, Pat Apodaca, P. O. Box 1660, Post Falls, ID 83854. Large catalogue of filk and folk music, a variety of gift items for the SF/F fan. Quite a bit of "period" folk music and Native American music.

SPACE OPERA HOUSE, c/o Barry & Sally Childs-Helton, 5271 Primrose Avenue, Indianapolis, IN 46220, (317) 251-8099.

POWELL'S BOOK STORE, 1005 W. Burnside, Portland, OR 97209, (503) 228-4651.

DAG PRODUCTIONS, 1810 14th St., #102, Santa Monica, CA 90404.

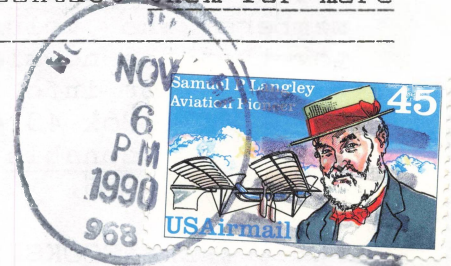
WAIL SONGS, P. O. Box 29888, Oakland, CA 94604.

THOR RECORDS, P. O. Box 40312, Downey, CA 90241.

FIREBIRD ARTS & MUSIC, INC., P. O. Box 14785, Portland, OR 97214-9998, 1-800-752-0494. Large selection of studio and convention filk and folk tapes, song books, maps, books, artwork and other items. Write or call for their catalogue. Firebird is offers a special Club Discount on orders of \$250 or more. If your club's order totals this amount, then Firebird will give a 20% discount on all items produced by their studio. This is an incentive for clubs, schools, and other groups to save money on bulk orders. Special dealer's rates also available. Contact them for more information on rates and upcoming projects.

NA MELE O NA HOKU Annual dues \$5.00

c/o D. F. Sanders
1415 Victoria St., #206
Honolulu, Hawaii 96822



The Filking Times

13261 Donegal Drive

Garden Grove, CA

92644-2304